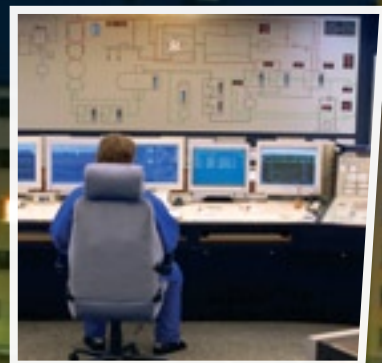
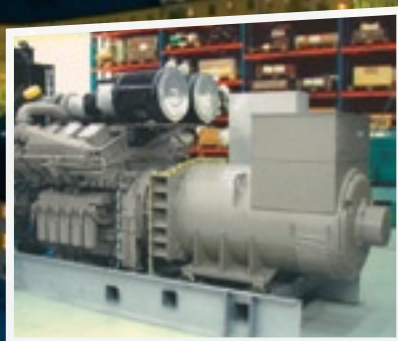


## Diesel Generating Sets Diesel Pump Sets



**Sisu Diesel** Generating Sets and Fire Water Pump Sets are designed for the demanding customers. Sisu Diesel generating sets and pump sets are developed for various applications requiring high reliability. The production program includes diesel generating sets covering the power range from 15 to 2000 kVA as well as diesel pump sets, including sprinkler and fire water pumps, in power range from 30 to 260 kW.



## Diesel Generating Sets

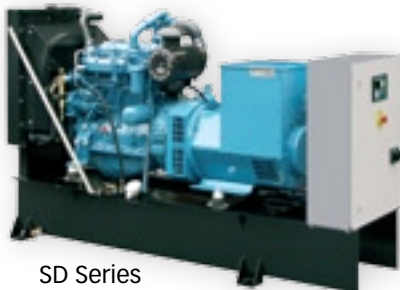
- Package Type Construction
- Incorporated fuel oil day tank
- Digital control
- Manual or automatic (AMF) mode

### Options

- AMF (Automatic Mains Failure control) + ATS Box (Automatic Transfer Switch)
- Automatic Paralleling with Mains



AJ Series



SD Series



VP Series

### AJ Series

Type	Diesel Model	PRP kVA/kW	LTP kVA/kW
AJ 17	D2009L03	15/12	16,5/13
AJ 22	D2009L04	20/16	22/17,6
AJ 33	TD2009L04	30/24	33/26,4

### SD Series

Type	Diesel Model	PRP kVA/kW	LTP kVA/kW
SD 60	320DSRG	60/48	66/53
SD 85	420DSRG	85/68	94/75
SD 100	420DSRAG	100/80	110/88
SD 130	620DSRG	130/104	143/114
SD 160	620DSRAG	160/128	176/141
SD 200	634DSRAG	200/160	220/176
SD 230	645DSBAG	230/184	253/202

### VP Series

Type	Diesel Model	PRP kVA/kW	LTP kVA/kW
VP 250	TAD734GE	250/200	280/224
VP 280	TAD940GE	279/223	307/246
VP 330	TAD941GE	326/261	359/287
VP 400	TAD1242GE	413/330	453/363
VP 500	TAD1641GE	500/400	556/445
VP 630	TAD1643GE	637/509	706/565

### PE Series

Type	Diesel Model	PRP kVA/kW	LTP kVA/kW
PE 800	4006-23TAG3A	801/640	903/722
PE 1000	4008TAG2/2A	1023/818	1129/903
PE 1250	4012TWG2	1237/989	1374/1099
PE 1500	4012TAG2/2A	1501/1201	1659/1327
PE 2000	4016TAG2/2A	2066/1653	2256/1804



GenPowex VP 400 in container

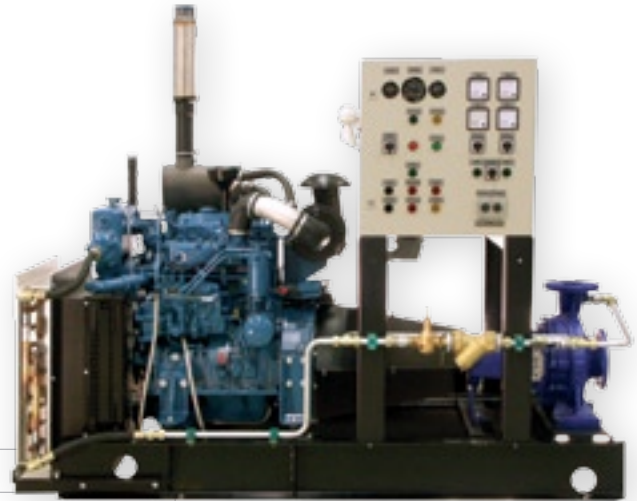


## Diesel Pump Sets

- Powered by Sisu Diesel engines
- Package Type Construction
- Fuel oil tank for 6h running
- CEA 4001 Fire Protection rules applied

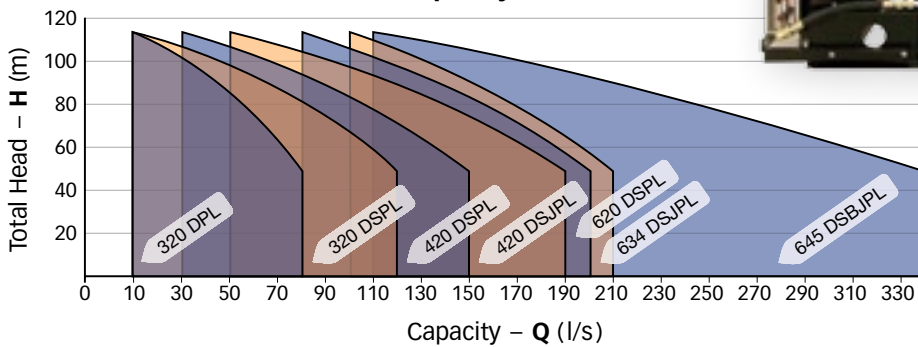
### Options

- Pump room cooler



Diesel Pump Set

Capacity Curves



## After-sales Services

Sisu Diesel GenPowex provides high quality after-sales services based on diesel engine technology and manufacturing knowledge since year 1947. Only regular and professional maintenance can assure reliable function of a genset or diesel pump.

### After-sales Support

- service contracts
- spare parts warehouse
- service/failure on site maintenance
- automation and electrical control system knowledge
- power station start up and personnel training
- genset rebuild and update projects





**Sisu Diesel Inc.**

GenPowex

Vesimyllynkatu 3, FI-33310 Tampere, Finland

Tel. +358 3 341 7111, Fax +358 3 343 3114

[www.sisudiesel.com](http://www.sisudiesel.com)



*Each genset and pump set is thoroughly tested and load test run before delivery with modern genset test facility*

TMP Advertising 02/2007



Sisu Diesel Inc. was founded in 1942 and it was known, as well as the products, by name Valmet until mid 1990's. Design and manufacture of Valmet diesel engines started in 1947. Since beginning of 2004 Sisu Diesel is part of AGCO Corporation, headquartered in Duluth, Georgia in USA, which is a global designer, manufacturer and distributor of Agricultural equipment. AGCO products are distributed in more than 140 countries through more than 8900 independent dealers and distributors around the world.

Brochure number 8427 -E